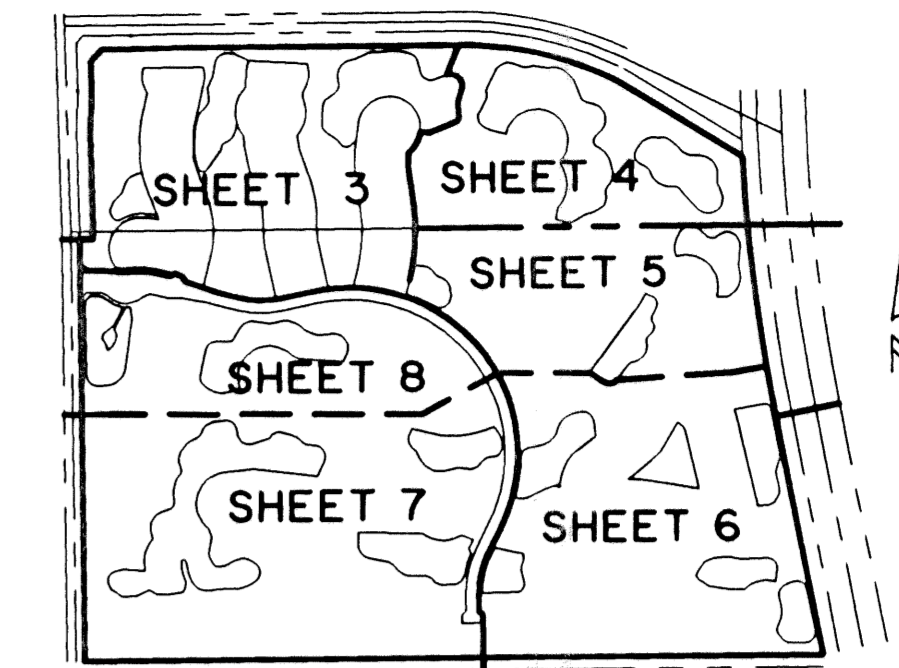


DELRAY TRAINING CENTER- PLAT ONE

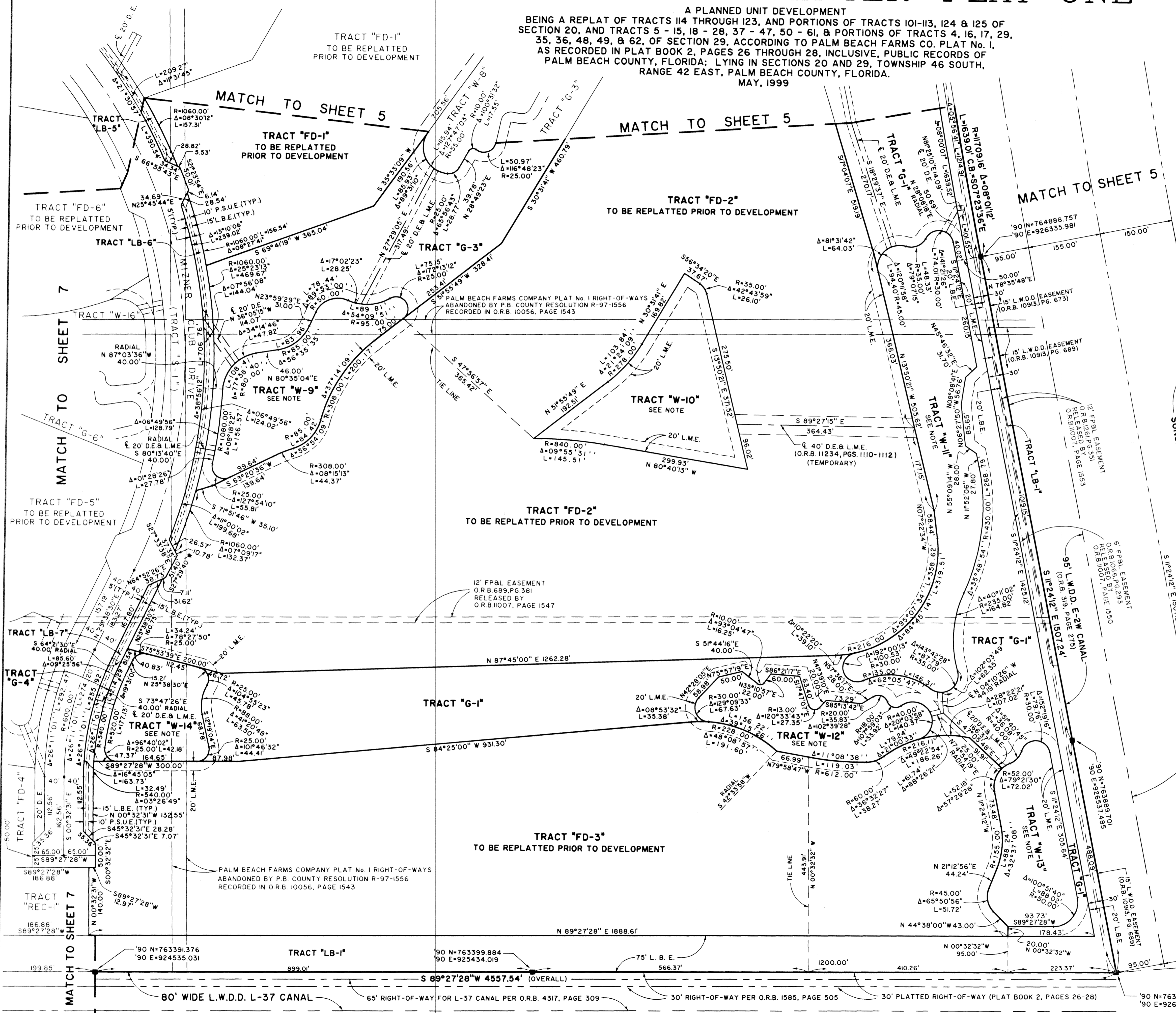
0664-001

65

A PLANNED UNIT DEVELOPMENT
 BEING A REPLAT OF TRACTS 114 THROUGH 123, AND PORTIONS OF TRACTS 101-113, 124 & 125 OF SECTION 20, AND TRACTS 5 - 15, 18 - 28, 37 - 47, 50 - 61, & PORTIONS OF TRACTS 4, 16, 17, 29, 35, 36, 48, 49, & 62, OF SECTION 29, ACCORDING TO PALM BEACH FARMS CO. PLAT NO. 1, AS RECORDED IN PLAT BOOK 2, PAGES 26 THROUGH 28, INCLUSIVE, PUBLIC RECORDS OF PALM BEACH COUNTY, FLORIDA; LYING IN SECTIONS 20 AND 29, TOWNSHIP 46 SOUTH, RANGE 42 EAST, PALM BEACH COUNTY, FLORIDA.
 MAY, 1999

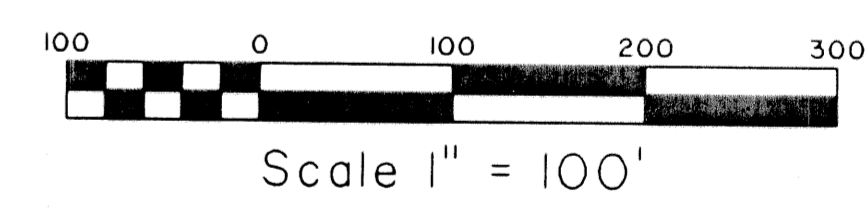


STATE OF FLORIDA
 COUNTY OF PALM BEACH
 THIS PLAT WAS FILED FOR RECORD AT _____
 M., THIS _____ DAY OF _____ 19____
 AND DULY RECORDED IN PLAT BOOK NO. _____
 ON PAGE _____
 DOROTHY H. WILKEN, CLERK OF THE CIRCUIT COURT
 BY _____ D.C.



NOTE: WATER MANAGEMENT TRACTS "W-1" THRU "W-20" TO BE MAINTAINED BY THE MIZNER COUNTRY CLUB MASTER ASSOCIATION, INC., SUBJECT TO EXISTING LITTORAL ZONE RESTRICTIVE COVENANT AGREEMENT AS RECORDED IN O.R.B. 10619, PG. 1666, PUBLIC RECORDS OF PALM BEACH COUNTY, FLORIDA.

COORDINATE NOTE:
 STATE PLANE COORDINATES SHOWN ARE GRID DATUM, NAD 83 1990 ADJUSTMENT, FLORIDA EAST ZONE, COORDINATE SYSTEM 1983 STATE PLANE, TRANSVERSE MERCATOR PROJECTION
 LINEAR UNIT = US SURVEY FEET
 ALL DISTANCES ARE GROUND
 SCALE FACTOR = 1.000020427035
 GROUND DISTANCE X SCALE FACTOR = GRID DISTANCE
 BEARINGS AS SHOWN HERON ARE GRID DATUM, NAD 83 1990 ADJUSTMENT, FLORIDA EAST ZONE.



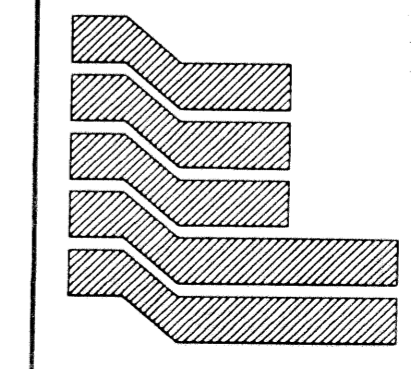
FND. P.B.C. BRASS DISC IN ROUND CONCRETE MONUMENT STAMPED GATTO
 90 N=763501.631
 90 E=928321.893

FND. P.B.C. BRASS DISC IN ROUND CONCRETE MONUMENT STAMPED GAST
 90 N=763538.300
 90 E=931367.350

N 89°18'37"E (GRID)
 3045.616' (GROUND)

N 89°18'37"E (GRID)
 3045.616' (GROUND)

SHEET 6 OF 8



Landmark Surveying & Mapping Inc.
 1850 Forest Hill Boulevard
 Ph. (561) 433-5405 Suite 100 W.P.B. Florida

DELRAY TRAINING CENTER-PLAT ONE

2395PLIF

Substitution
 BOOK 66
 FLOOD MAP # 215A
 ZONING PUD
 67-01-52
 87-1
 TRAZ 169/169
 PLD NAME: Delray Training Center

PALM BEACH FARMS CO. PLAT NO. 1
 (PLAT BOOK 2, PAGES 26 - 28)